

Section IX

Plumbing Instructions Standard

PLUMBING CONNECTIONS AND HOOK UPS

- 1.0 The plumbing diagram, located in the rear of this section, indicated PVC pipe sizes, locations of shut-off valves supplied by SwimEx, recommended locations for additional valves, component (heater/pump/filter) placement with fitting sizes, and etc. The unit must be plumbed in accordance with the specifications shown in the diagram.**
- 1.1** The plumbing of the unit and associated equipment must be performed by a licensed plumber in compliance with appropriate local codes. A licensed electrician must wire the heater and pump units in accordance to the manufacturer's instructions and electrical codes. This should also be coordinated with all other electrical work. Before planning the SwimEx site, consideration must be given to the location of the heater, pump, and filter units. Access to the units, the route of the water lines, installation of any optional equipment (such as an Ozonator), and drainage from the site must also be planned. Read the manufacturer's installation manual, and follow their installation guidelines.
- 1.2** We recommend Schedule 80 PVC piping, however, Schedule 40 is sufficient. (For more efficient pump operations, use flexible PVC.) Try to use threaded connections wherever possible. Use 45° angles in the piping wherever possible (use two 45° elbows to make a 90° angle, or for more efficient pump operation, use flexible PVC piping). Keep the heater, pump and filter units below the height of the SwimEx's water level.
Note: Before attaching the PVC piping, check to see that all "O-rings" inside the shut-off valves (2 each valve) are properly set -- no crimps or tears. These O-rings are accessed by removing the threaded fittings on both sides of the valve.
- 1.3** The water supply line to the SwimEx (from the heater, pump, and filter units to the single eyeball inlet) is via 1-1/2" diameter PVC piping. The inlet valve is mounted on the front right side of Section U3. This line is plumbed from the opening of the heater to this inlet valve. Follow the instructions outlined in the manufacturer's manual. A shut-off valve (1- 1/2" diameter) should be installed in this line immediately after the heater connector.
Note: If you are installing the Ozonator option, it is to be installed at this time, and on this 1-1/2" diameter line, as close to the inlet valve as possible.

(See "Purezone" Manufacturer's Manual and the Ozonator Plumbing diagram located in the rear of this section).

PLUMBING CONNECTIONS CONT'D.:

- 1.4 The return line, (the water line bringing water from the SwimEx to the filter) is plumbed via 2" PVC piping connected from both the skimmer (1-1/2") and a return valve (1-1/2"), which is mounted on the paddlewheel motor side (rear of Section U2). This line is plumbed to the 2" opening of the pump per manufacturer's instructions. A 2" diameter shut-off valve should be installed in the 2" line just before the pump opening.
- 1.5 The main drain line, if permanently plumbed in, must conform to local sanitation and plumbing codes. A 1-1/2" diameter PVC drainage shut-off valve was provided and was installed in the "Water Test" Section 2.1. Close the valve before filling the tank.
- 1.6 The SwimEx comes with a 3/4" threaded opening to attach a water fill line. The opening is located above the water line, just behind the skimmer (See "Blueprints"). "Hard plumb" by connecting PVC piping to this opening, and run a water fill line to a conveniently located shut-off valve. This will enable the pool to be filled or "topped-off" conveniently. **IMPORTANT: A "BACK-FLOW" PROTECTION DEVICE APPROVED BY YOUR LOCAL AUTHORITIES MUST BE INSTALLED IN ACCORDANCE WITH LOCAL CODES.**
- NOTE:** For all pool models installed within the boundaries of the City of Los Angeles, a 3/4" through hole is also located on the pool directly opposite and 1" below the above-mentioned 3/4" water fill line. This extra 3/4" line is to be used as an overflow line. Plumb this line directly onto your draining system using a backflow protection device approved and listed by your local authorities, and in accordance with local codes.
- 1.7 Let the PVC pipe cement dry thoroughly before filling the SwimEx with water and opening the proper shut-off valves. Fill the SwimEx with water so the water line rises just above the front grille (1/4" for the standard 5 HP motor or 1/2" for the optional 7.5 HP). At this time, check and repair any leaks in the plumbing system. **Note:** Make sure you have familiarized yourself with the principles and operation of the heater, pump, and filter systems. For better water circulation, we recommend removing the hinged door that is attached to the skimmer basket, leaving the basket in place at all times.
- 1.8 Check to make sure that all valves are open, except the main drain. Make sure the heater, pump, and filter systems are ready to operate (See manufacturers' manuals). Turn the pump power switch to "ON". Open the bleeder valve on top of the filter tank to let the trapped air escape. (This may have to be done several times until there is no air left in the plumbing system.) While the pump is running, carefully inspect all plumbing lines, connections, etc., and re-inspect all 3 flange seams of the SwimEx unit. Set the heater thermostat per manufacturer's instructions. **Note:** For anyone using an Ozonator or a commercial pump, we recommend leaving the pump on 24 hours per day.

2.1 OZONATOR

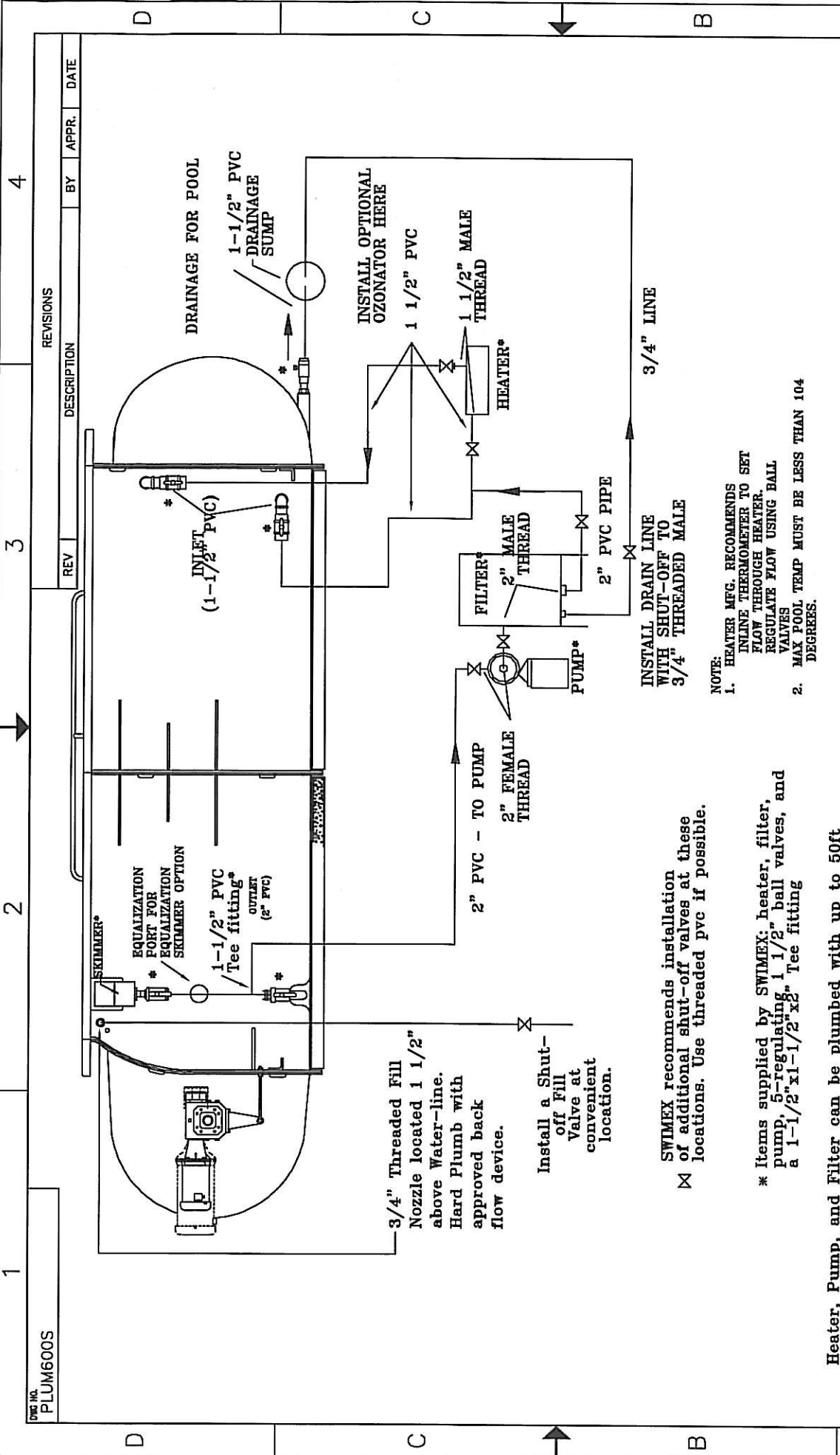
The Ozonator is installed according to the Ozonator Plumbing Diagram (located at the end of this section). The Ozonator injector system is plumbed into the 1-1/2" PVC pipe between the pool and the heater. Use 1-1/2" PVC piping for all connections. Install the Ozonator injector system at least 4', but no more than 15', from the pool (Measure pipe length).

IMPORTANT NOTES ON THE INSTALLATION OF THE OZONATOR:

- 1) Make sure to install the injector (Part 5) and the check valve (Part 1) with the flow direction from the heater to the pool.
 - 2) Make sure to "loop" the hose above the water level in the pool.
- 2.2** To install all other options, see the manufacturers' manuals for instructions on proper installation, use and care. The manuals can be found in the original shipping boxes.

NOTES: *Keep this manual for reference.

*Once the unit is running properly, and before you begin using your SwimEx, read and refer to the "SwimEx Owner's Manual".



NO.	PART NO.	DESCRIPTION	QTY																
PARTS LIST																			
<table border="1" style="width: 100%;"> <tr> <td colspan="2"> SWIMEX, INC 846 Airport Rd. Fall River, MA 02720 TEL. (508) 646-1900 FAX (508) 675-0325 </td> <td colspan="2"> RECOMMENDED PLUMBING SWIMEX MODELS 480S & 600S </td> </tr> <tr> <td colspan="2"> UNLESS OTHERWISE SPECIFIED: MACHINED SURFACE FINISHES 12/ MACHINED FILED RAUN .015-.030 THIRD ANGLE </td> <td colspan="2"> REV A </td> </tr> <tr> <td colspan="2"> ALL DIMENSIONS IN INCHES </td> <td colspan="2"> PART # PLUM600S </td> </tr> <tr> <td colspan="2"> THIS DOCUMENT IS THE PROPERTY OF SWIMEX AND IS NOT TO BE USED OR REPRODUCED IN WHOLE OR IN PART WITHOUT WRITTEN PERMISSION. </td> <td colspan="2"> DRW BY: M.P.F. MA DATE: 12-12-08 SCALE: 1 OF 1 </td> </tr> </table>				SWIMEX, INC 846 Airport Rd. Fall River, MA 02720 TEL. (508) 646-1900 FAX (508) 675-0325		RECOMMENDED PLUMBING SWIMEX MODELS 480S & 600S		UNLESS OTHERWISE SPECIFIED: MACHINED SURFACE FINISHES 12/ MACHINED FILED RAUN .015-.030 THIRD ANGLE		REV A		ALL DIMENSIONS IN INCHES		PART # PLUM600S		THIS DOCUMENT IS THE PROPERTY OF SWIMEX AND IS NOT TO BE USED OR REPRODUCED IN WHOLE OR IN PART WITHOUT WRITTEN PERMISSION.		DRW BY: M.P.F. MA DATE: 12-12-08 SCALE: 1 OF 1	
SWIMEX, INC 846 Airport Rd. Fall River, MA 02720 TEL. (508) 646-1900 FAX (508) 675-0325		RECOMMENDED PLUMBING SWIMEX MODELS 480S & 600S																	
UNLESS OTHERWISE SPECIFIED: MACHINED SURFACE FINISHES 12/ MACHINED FILED RAUN .015-.030 THIRD ANGLE		REV A																	
ALL DIMENSIONS IN INCHES		PART # PLUM600S																	
THIS DOCUMENT IS THE PROPERTY OF SWIMEX AND IS NOT TO BE USED OR REPRODUCED IN WHOLE OR IN PART WITHOUT WRITTEN PERMISSION.		DRW BY: M.P.F. MA DATE: 12-12-08 SCALE: 1 OF 1																	
<table border="1" style="width: 100%;"> <tr> <td> HEATER, PUMP, and Filter can be plumbed with up to 50ft of pipe from SwimEx. Filter system must be below water surface of pool. Pipe lengths should be kept as short as possible and use 45° elbows where possible </td> <td> * Items supplied by SWIMEX: heater, filter, pump, 5-regulating, 1 1/2" ball valves, and a 1-1/2"x1-1/2"x2" Tee fitting </td> </tr> </table>				HEATER, PUMP, and Filter can be plumbed with up to 50ft of pipe from SwimEx. Filter system must be below water surface of pool. Pipe lengths should be kept as short as possible and use 45° elbows where possible	* Items supplied by SWIMEX: heater, filter, pump, 5-regulating, 1 1/2" ball valves, and a 1-1/2"x1-1/2"x2" Tee fitting														
HEATER, PUMP, and Filter can be plumbed with up to 50ft of pipe from SwimEx. Filter system must be below water surface of pool. Pipe lengths should be kept as short as possible and use 45° elbows where possible	* Items supplied by SWIMEX: heater, filter, pump, 5-regulating, 1 1/2" ball valves, and a 1-1/2"x1-1/2"x2" Tee fitting																		
SWIMEX recommends installation of additional shut-off valves at these locations. Use threaded pvc if possible.																			
Install a Shut-off Valve at convenient location.																			
3/4" Threaded Fill Nozzle located 1 1/2" above Water-line. Hard Plumb with approved back flow device.																			
2" PVC - TO PUMP 2" FEMALE THREAD																			
2" PVC PIPE 2" MALE THREAD FILTER*																			
3/4" LINE WITH SHUT-OFF TO 3/4" THREADED MALE																			
HEATER* 1 1/2" MALE THREAD 1 1/2" PVC INSTALL OPTIONAL OZONATOR HERE																			
DRAINAGE FOR POOL 1-1/2" PVC DRAINAGE SUMP																			
EQUALIZATION PORT FOR EQUALIZATION SKIMMER OPTION 1-1/2" PVC Tee fitting* OUTLET (2" PVC)																			
SKIMMER*																			
1-1/2" PVC (1-1/2" PVC)																			
REVISIONS REV DESCRIPTION BY APPR. DATE																			
1 2 3 4																			

Heater, Pump, and Filter can be plumbed with up to 50ft of pipe from SwimEx. Filter system must be below water surface of pool. Pipe lengths should be kept as short as possible and use 45° elbows where possible

* Items supplied by SWIMEX: heater, filter, pump, 5-regulating, 1 1/2" ball valves, and a 1-1/2"x1-1/2"x2" Tee fitting

SWIMEX recommends installation of additional shut-off valves at these locations. Use threaded pvc if possible.

Install a Shut-off Valve at convenient location.

3/4" Threaded Fill Nozzle located 1 1/2" above Water-line. Hard Plumb with approved back flow device.